



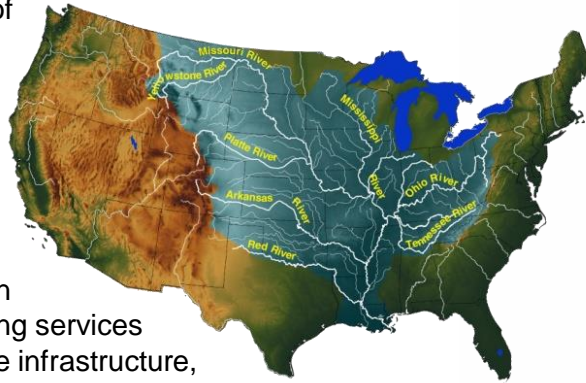
VALUE TO THE NATION

US ARMY CORPS OF ENGINEERS ★ MISSISSIPPI VALLEY DIVISION ★ BUILDING STRONG®

INTRODUCTION

As the U.S. Army Corps of Engineers has done for more than 200 years, the civil works program continues to provide value to the nation by delivering sustainable solutions to meet the water resource requirements.

The Mississippi Valley Division is responsible for the Corps water resources programs within 370,000-square miles of the Mississippi River Valley. The division boundary encompasses the entire Mississippi River from Lake Itasca, Minnesota, to the Gulf of Mexico, and includes all or parts of 12 states: Kentucky, Louisiana, Mississippi, Illinois, Missouri, Arkansas, Iowa, Wisconsin, Minnesota, North Dakota and South Dakota.

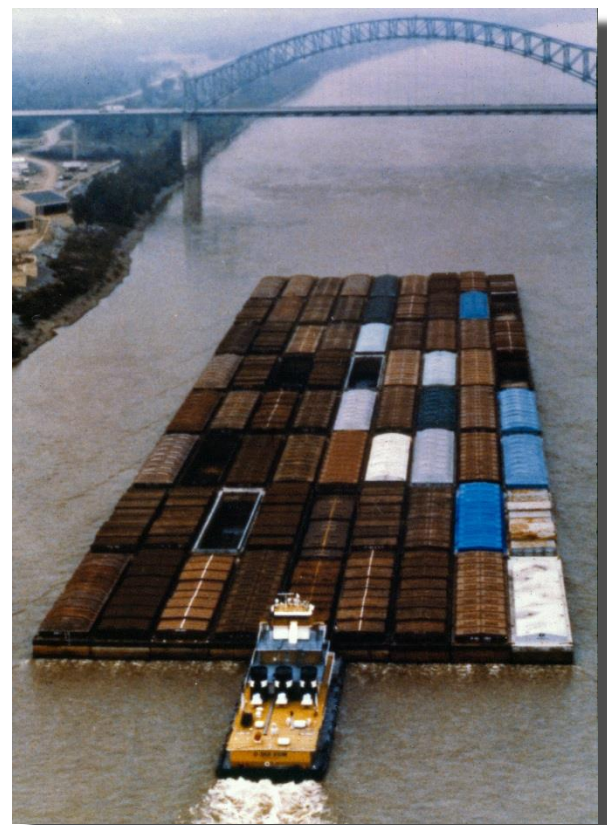


The mission of the division is to serve the Mississippi Valley region by providing vital public engineering services and stewardship of water resource infrastructure, partnering in peace and war, to strengthen our nation's security, energize the economy and reduce risks from disasters.

250+ tributaries drain into the Mississippi River, the largest of which are the Ohio and Missouri rivers. The 1.25 million-square-mile Mississippi River drainage basin gathers water from 41 percent of the continental United States. This includes all or parts of 31 states and two Canadian provinces.

NAVIGATION

- 4,267 miles of commercial waterways
 - ▶ 11 Inland Waterway systems
 - ▶ 19 other waterway systems
 - ▶ 1/3 of U.S. inland waterways
 - ▶ Moves 47% of U.S. inland waterborne commerce
- 669 million tons of cargo move on the Mississippi River system each year
- Main Commodities: petroleum & petroleum products, crude materials, food & farm products, chemicals and related products, primary manufactured goods, and coal
- 7 deep-draft ports
- 51 shallow-draft ports



- \$6.2 billion in domestic transportation savings
- 62 locks:
 - ▶ 29 on the Mississippi River
 - ▶ 8 on the Illinois River
 - ▶ 6 on the Gulf Intracoastal Waterway, LA
 - ▶ 5 on the Red River, LA
 - ▶ 4 on the Ouachita & Black Rivers, AR & LA
 - ▶ 1 on the Kaskaskia River, IL
 - ▶ 1 at Old River, LA
 - ▶ 1 at Bayou Teche, LA
 - ▶ 3 in the Atchafalaya Basin, LA
 - ▶ 1 at Freshwater Bayou, LA
 - ▶ 3 on West Pear River, LA



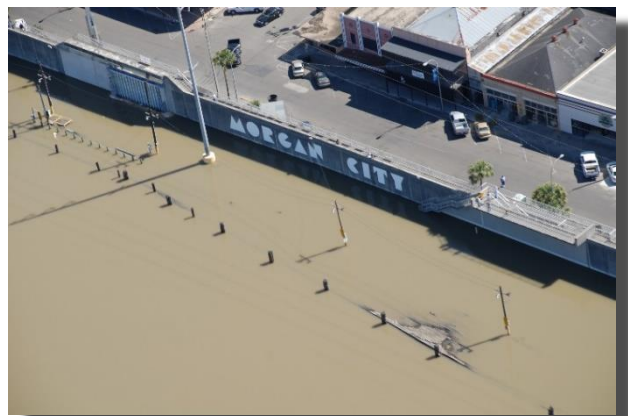
BUDGET AND MANPOWER

- Total Division-wide employees: 4,503
- Division headquarters employees: 120
- FY 2017/18 Supplemental Program: \$2.975 billion
- FY 2019 Appropriations: \$1.42 billion
- FY 2020 President's Budget: \$795.5 million



FLOOD DAMAGE REDUCTION

- 36 flood control reservoirs:
 - ▶ 3 in Arkansas
 - ▶ 4 in Mississippi
 - ▶ 5 in Illinois
 - ▶ 2 in Missouri
 - ▶ 3 in Iowa
 - ▶ 2 in North Dakota
 - ▶ 3 in Louisiana
 - ▶ 1 in Wisconsin
 - ▶ 13 in Minnesota
- 59 pumping stations (MR&T)
- 400 drainage structures
- ~8,400 miles of levee (3,486 miles MR&T)
- 143 miles of foreshore protection (MS River)
- 700 miles of wing dams
- 1,144 miles of revetment (MS River)
- 326 miles of rock dikes (MS River)
- \$1.27 trillion cumulative damages prevented (MR&T)
- \$206.5 billion damages prevented in 2018 (MR&T)



HYDROPOWER

- 4 Corps plants produce 226.5 MW of power:
 - ▶ Clarence Cannon Dam on the Salt River at Monroe City, Mo.
 - ▶ Narrows Dam on the Little Missouri River at Murfreesboro, Ark.
 - ▶ Blakely Mountain Dam on the Ouachita River near Mountain Pine, Ark.
 - ▶ DeGray Dam on the Caddo River near Arkadelphia, Ark.
- 8 non-federal plants (4 private, 4 municipal) at Corps dams on Mississippi & Illinois rivers provide 395 megawatts of power.



RECREATION

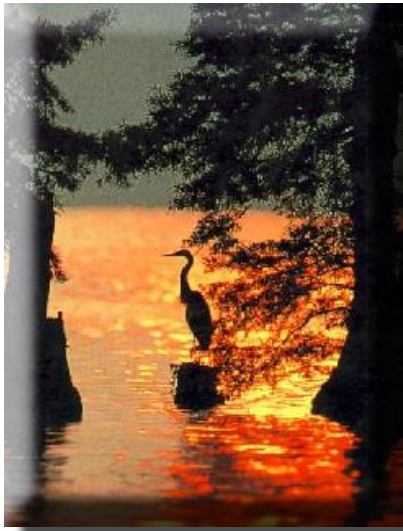
- 2+ million acres
- 46 lakes
- 875 recreation areas
- 3,627 picnic sites
- 11,775 camping sites
- 304 playgrounds
- 112 swimming areas
- 397 number of trails
- 1,161 trail miles
- 563 boat ramps
- 11,743 marina slips
- \$986 million in visitor spending
- 27+ million visitors annually



ENVIRONMENTAL

In all aspects of natural and cultural resources management, the Corps promotes awareness of environmental values and adheres to sound environmental stewardship, protection, compliance and restoration practices. Environmental sustainability and watershed approaches are central to the ecosystem restoration mission of the Corps. Project impacts on the environment are identified and a sustainable balance of environmental, economic, social and engineering factors is sought.

The division houses the National Ecosystem Restoration Planning Center of Expertise. It provides services to the nation including environmental training, agency technical review, independent external peer review, environmental model certification, as well as supporting ecosystem research and development needs. Center resources include virtual team members from around the nation including Corps staff, non-government organizations, universities and other state and federal agencies.



EMERGENCY RESPONSE

2019 Flood events (through June)

- Emergency Operation Centers of all six MVD districts were activated with 1,200+ team members engaged.
- U.S. Army Corps of Engineers Headquarters, the Corps' Southwest, Northwest and Great Lakes & Ohio River divisions, and the U.S. Coast Guard provided support.
- For the Mississippi River valley, the event was a top 4 flood of record. The New Orleans District's Emergency Operations Center has been activated for 240 days, with 133 days of 24/7 operations (as of July 2) – its longest flood of record, to date.
- Including the National Flood Fight Materiel Center, nearly \$17.5 million in Flood Control and Coastal Erosion funding was provided due to the duration of the event.
- The Corps provided: 4.7 million sand bags, 1,200+ rolls of poly, 108 pumps and more than 20,000 linear feet of HESCO bastion to local communities.
- For the first time ever, this event required operation of the Bonnet Carré spillway twice in one year. The structure was opened Feb. 27 for 44 days, and again May 10 for 53 days (as of July 2), and counting.
- Many gage locations set new consecutive-days-above-flood-stage records with most breaking the 1927 flood records.



CONTACT INFORMATION




USACE
Mississippi Valley Division
P.O. Box 80
Vicksburg, MS 39181-0080
(601) 634-5757




USAED, St. Paul
Army Corps of Engineers Centre
190 Fifth Street East
St. Paul, MN 55101-1638
(651) 290-5200




USAED, Rock Island
Clock Tower Building
P.O. Box 2004
Rock Island, IL 61204
(309) 794-4200




USAED, St. Louis
1222 Spruce Street
St. Louis, MO 63103-2833
(314) 331-8002



USAED, Memphis
167 N. Main Street
Memphis, TN 38103-1894
(901) 544-3348



USAED, Vicksburg
4155 Clay Street
Vicksburg, MS 39183
(601) 631-5000



USAED, New Orleans
P.O. Box 60267
New Orleans LA 70160
(504) 865-1121

July 2019